



Covenant
FOUNDATION

In support of:



WHEN A **MENTAL HEALTH CRISIS** OCCURS.
WHEN **BLOOD** CAN'T REACH **THE HEART**.
WHEN **ACCIDENTS** HAPPEN.

Each year, the Misericordia emergency department sees more than 50,000 patient visits - twice the capacity it was designed to support.

Our patients come from across the Edmonton area and Northern Alberta at a time of urgent need and great vulnerability.

EFFICIENT | WELCOMING | WARM | SAFE

COVENANTFOUNDATION.CA



All photos featured depict the current emergency department.

ROOM TO CARE. TIME TO GIVE.

We ask you to join together with Covenant Health, Alberta Health Services, and generous members of our community, to construct and enhance a new emergency department at the Misericordia Community Hospital.

The current department was built in 1969 and was designed to accommodate 25,000 patient visits annually. A lot has changed over the last 50 years – a growing population with evolving demographics has outgrown the physical space, and revolutionary advancements in technology have changed how we care for patients. Now the emergency department must change, too.

Our compassionate staff have been innovative in making the best use of space and providing the highest quality care they can, but aging infrastructure challenges their efforts. We're building the modern, state-of-the-art emergency department our community needs and deserves. We're making room to care. Now is the time to give.

EFFICIENT | WELCOMING | WARM | SAFE



WHEN A LIFE IS ON THE LINE, OUR **MISERICORDIA EMERGENCY DEPARTMENT** IS THERE.

To provide the compassionate care they need and deserve, we require a space that not only includes the tools and technology to provide the highest quality of care for the whole person but also offers patients safety, comfort, privacy and dignity during their stay. Our new Misericordia emergency department will have room to care for our most vulnerable patients...



MENTAL HEALTH & ADDICTIONS

Individuals with mental health concerns and addictions will receive the unique care they require in a space designed with safety and comfort in mind.



SENIORS

The new department has been designed to increase seniors' comfort level and understanding of their care journey.



PATIENT FAMILIES

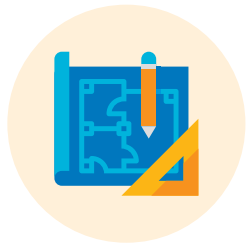
Private discussion rooms will offer patients, families and care providers a quiet area to discuss sensitive matters and make difficult decisions. A new family space will give loved ones a private, comforting space to gather during times of stress and traumatic experience.



CHILDREN

Kid-friendly interactive play area in the patient arrival area and private rooms to enhance the family experience.

OUR NEW MISERICORDIA EMERGENCY BY THE NUMBERS

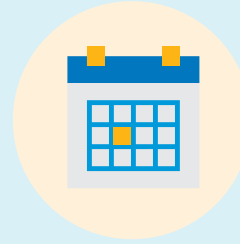


CURRENT
EMERGENCY
DEPARTMENT **1,700** SQM

NEW
EMERGENCY
DEPARTMENT **5,000** SQM

**TOTAL
SQUARE
METRES**

NET GAIN **3,300** SQM

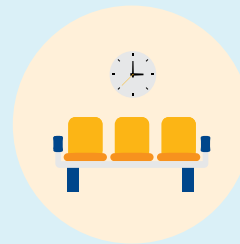


OPENING YEAR

CURRENT
1969

NEW
2023*

**Expected opening date*



WAITING SPACES

Waiting spaces have been created throughout the emergency department in care spaces in which patients will see the doctor. This allows patients to be closer to the team who will provide care.



AMBULANCE BAYS

CURRENT **4** NEW **6** NET GAIN **2**



MENTAL HEALTH BEDS

CURRENT **7** NEW **8** NET GAIN **1**



ACUTE CARE SPACES

CURRENT **12** NEW **16** NET GAIN **4**



TOTAL TREATMENT SPACES

CURRENT **26** NEW **66** NET GAIN **40**



RADIOLOGY ROOMS IN EMERGENCY

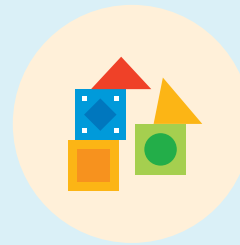
CURRENT **0** NEW **2** NET GAIN **2**



PRIVATE ISOLATION ROOMS

CURRENT **1** NEW **6** NET GAIN **5**

Individual rooms will reduce the spread of germs, infections & diseases.



PATIENT LOUNGE WITH CHILDREN'S PLAY AREA

An interactive space to occupy and engage kids.



TRAINING CENTRE

An on-site education centre will provide ongoing training to staff ensuring they're prepared for any situation.

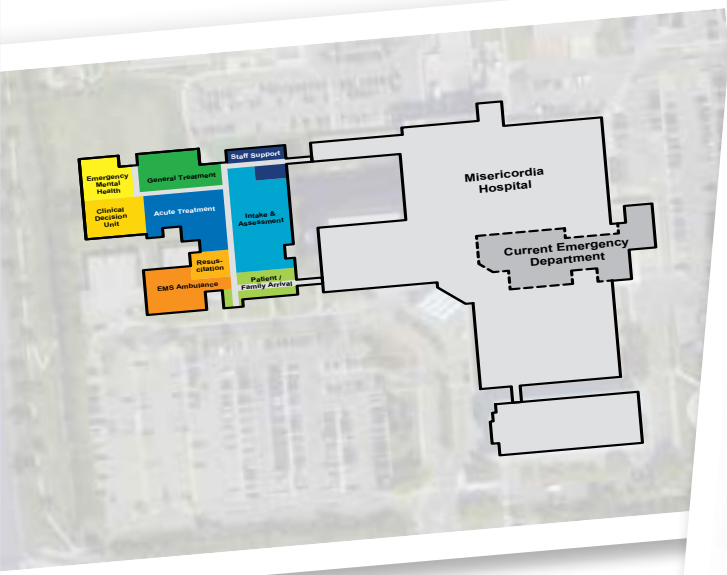


PATIENT VISITS DESIGNED TO ACCOMMODATE

CURRENT
25,000

NEW
60,000

NET GAIN
35,000



WHEN WILL IT OPEN?

The new space is expected to open its doors in 2023. During construction the existing emergency department will remain open to ensure patient care is uninterrupted.

Since announcing the new emergency department in the summer of 2018, the planning team has designed a patient-centered, state-of-the-art space to handle 60,000 patient visits annually. Based on leading research, best practices and collaboration of staff and patients, the new department will better support care provided at the hospital.

WHERE WILL IT BE BUILT?

The new emergency department will be built on the west side of the existing Misericordia Community Hospital and will nearly triple the footprint of the current emergency department.

WHAT WILL IT COST?

The Government of Alberta has committed funding to build the new emergency department. However, to ensure our community has the modern and efficient emergency department it needs and deserves, \$4 million in donor funding is required. Support from our donors will not support bricks and mortar. The funds will provide enhancements to programs, services, and technologies to ensure our patients continue to receive the highest quality of professional, compassionate care.

HOW YOU CAN HELP

By providing financial support for the redevelopment of the Misericordia emergency department, you will help enhance the care provided to the tens of thousands of patient visits each year.

- Your support will comfort an upset child worried about their loved one.
- Your support will allow families the room and privacy to make decisions about their aging parent's health.
- Your support will give staff the quiet space to cope with traumatic stressors.
- Your support will provide a mental health patient the calm environment they need.
- Your support will keep health care providers trained and prepared for any situation.
- Your support makes room to care.



ROOM TO CARE. TIME TO GIVE.

Join us in the construction and enhancement of the Misericordia Community Hospital emergency department our community needs and deserves. Join us in making room to care for all our patients.

Marty Van Sloun
Major Gifts Officer
marty.vansloun@covenanthealth.ca
780-342-8126

Covenant Foundation
3C60, 11111 Jasper Avenue
Edmonton, AB T5K 0L4

Charitable Registration Number: 125868125RR0001

Covenant Foundation partners with communities to support multiple Covenant Health, Covenant Care and Covenant Living sites across Alberta. We invest in transforming health care and helping to create vibrant communities of health and healing.

TOGETHER. WE CAN.



**Covenant
FOUNDATION**

In support of:



**Covenant
Health**

**THANK YOU FOR WORKING WITH US TO MAKE A DIFFERENCE IN HEALTH CARE
FOR PATIENTS, RESIDENTS AND FAMILIES IN YOUR COMMUNITY.**